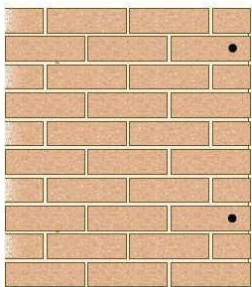
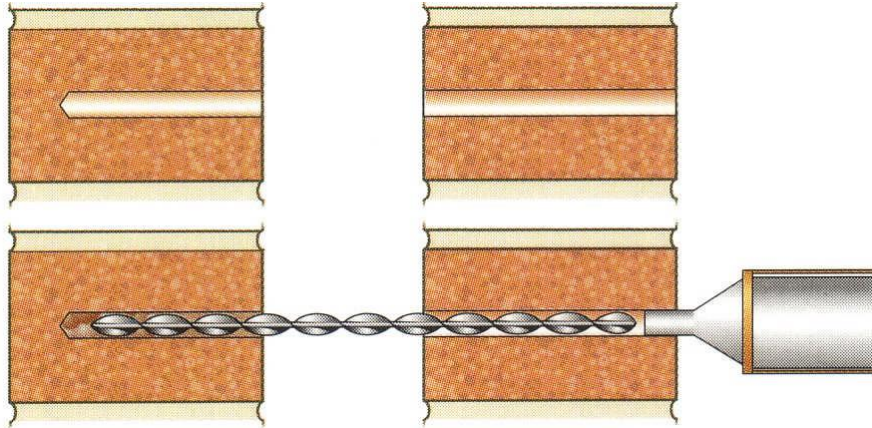
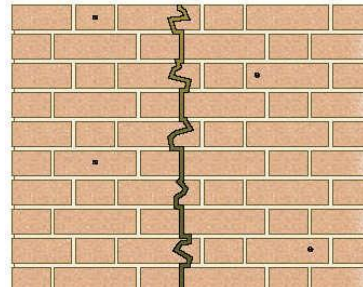
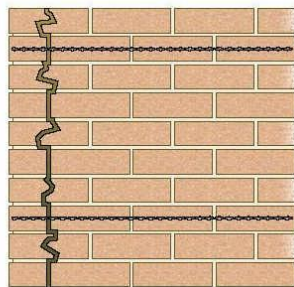


THOR 9mm WHO60 GROUT BONDED TIES FOR INCONSISTENT MASONRY QUALITY OR DEEP EMBEDMENT

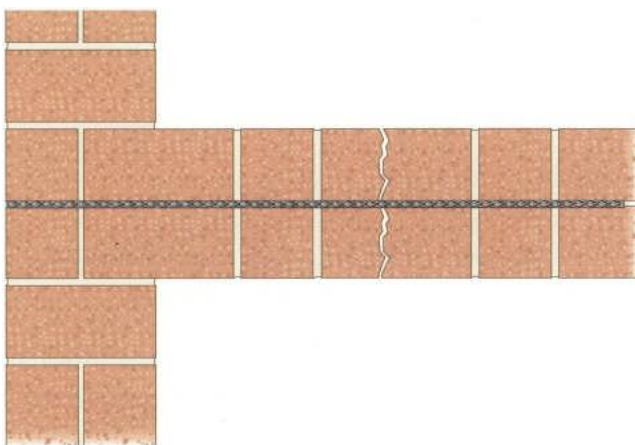
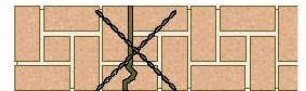


Repair of Corner Crack



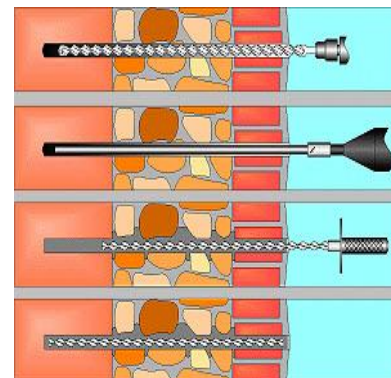
Cross Stitching a Cracked 350mm Solid Wall

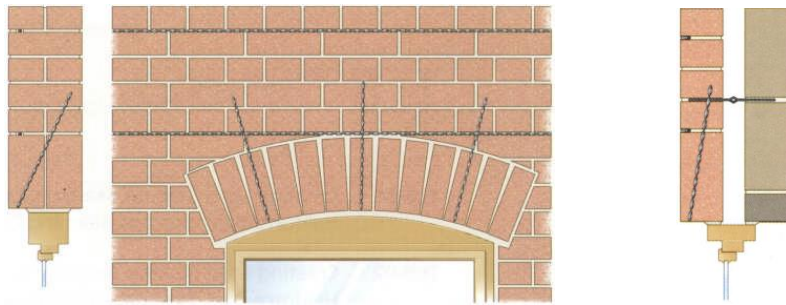
(Cosmetic crack repair to walls having architectural patch resistant renders)



Repair to Internal Masonry Partition Wall

(Graphics for Illustrative Purposes only)





Repair of Masonry Arches and Lintels (Graphics for Illustrative Purposes only)

Thor 9mm WHO60 Grout Bonded Tie Installation

Recommended for inconsistent quality masonry, rubble-filled or where deep embedment required.

Cavity Walls

1. Drill 12 – 14mm pilot holes to both leaves using masonry drill and clean hole of all drillings and dust – inner lead minimum embedment of 75mm.
2. Holes should be thoroughly flushed with water, or treated with a suitable primer where high porosity masonry exists.
3. Install WHO60 Grout to remote leaf drilled hole, with appropriate tool, and insert tie.
4. (Test Only) Apply test procedure after curing period.
5. Install WHO60 Grout to nearside leaf encapsulating the recessed tie and make good in accordance with specification. *(N.B. for solid walls – fully grout drilled holes and then insert tie)*

Cavity Wall Tie Spacing – must be determined by a Consulting Structural Engineer – subject to minimum tensile proof loads being achieved and in accordance with A.S. 3700 2001 i.e. Max. allowable 600mm grid spacing.

WHO60 Grout Bonded tie procedures may be combined where far connection leaf is either harder than near leaf, or, is constructed with hardwood timber studs or timber floor/ceiling/roof timbers.

Thor 9mm WHO60 Grouted Ties Thor WHO60 Indicative Usage Rates (Solid Masonry)

Hole Diameter	Approximate Usage Rate
12mm (110ml/ litre)	8 metres/ litre
13mm (125ml / litre)	7 metres / litre
14mm (150ml / litre)	6 metres / litre



www.thorhelical.co.za

Postal Address 3 Fairford Downs, Cotswold Downs 105 Inanda Road Hillcrest KZN 3650

Telephone 073 485 2979 Email sales@thorhelical.co.za Internet www.thorhelical.co.za